

CLIENT LOGO

Doric Glass Block

SUBMITTAL SHEET

Project:
Owner:

Project #:
Location:

Distributed By:

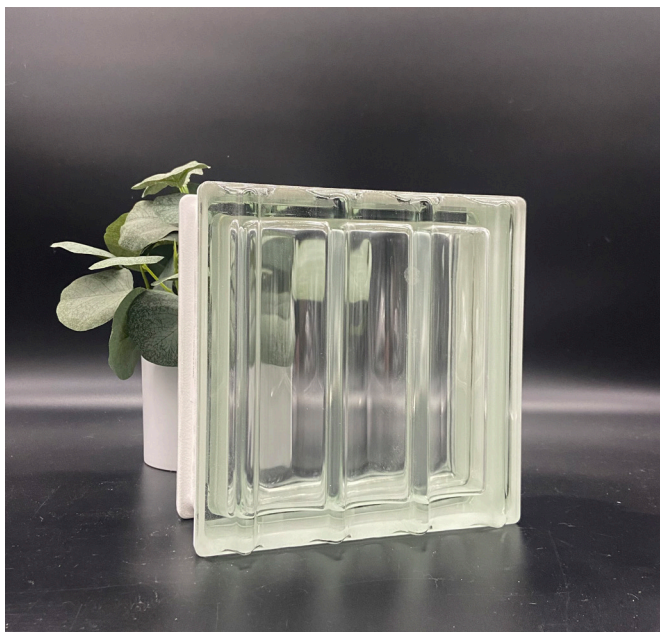
GBA Architectural Products + Services
1213 Medina Road
Medina, OH 44256
(877) 280-7700

Contact: Steve Boesch
steveb@gbaproducts.com
Cell: (330) 441-2996



ARCHITECTURAL PRODUCTS + SERVICES

www.gbaproducts.com



Doric Q19 Transparent

Product Line: Design
Pattern: Doric
Dimensions: 7-1/2" x 7-1/2" x 3-1/8"/3-3/4"
Weight: 6.6 lbs
U-Value: 0.53
SHGC: 76
Visible Light Transmission (%): 77
Sound Transmission (S.T.C.): 42

General Notes

- 1.) Refer to image for actual purchase only.
- 2.) All submissions to meet local building code and adhere to necessary maintenance and installation requirements by the manufacturer.
- 3.) Vendor to submit finish sample for approval prior to purchase.

Additional Notes/Comments

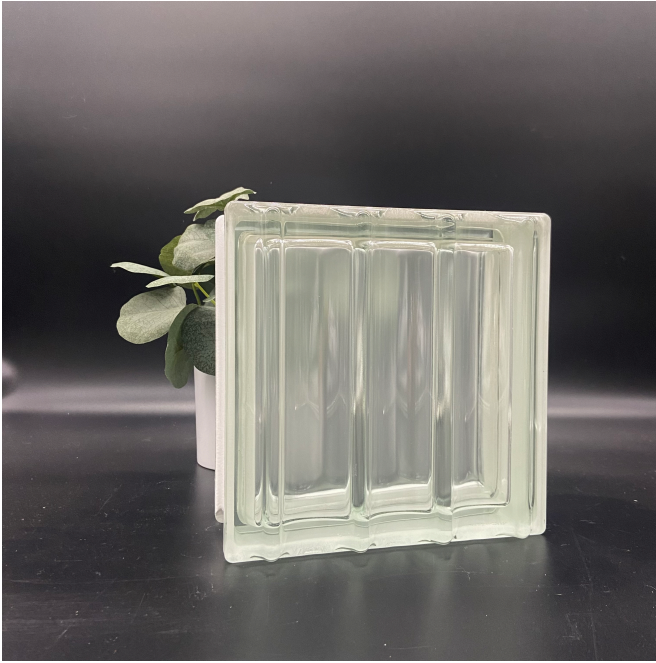
Seves Glass Block is the
World's leading manufacturer
of glass block, interior design
and architectural applications

**SEVES
GLASS
BLOCK**

Doric Glass Block



Additional Glass Block Patterns



Doric Q19 1S

Product Line: Design

Pattern: Doric

Dimensions: 7-1/2" x 7-1/2" x 3-1/8"/3-3/4"

Weight: 6.6 lbs

U-Value: 0.53

Sound Transmission (S.T.C.): 42



Doric Q19 - Metalized

Product Line: Design

Pattern: Doric

Dimensions: 7-1/2" x 7-1/2" x 3-1/8"/3-3/4"

Weight: 6.6 lbs

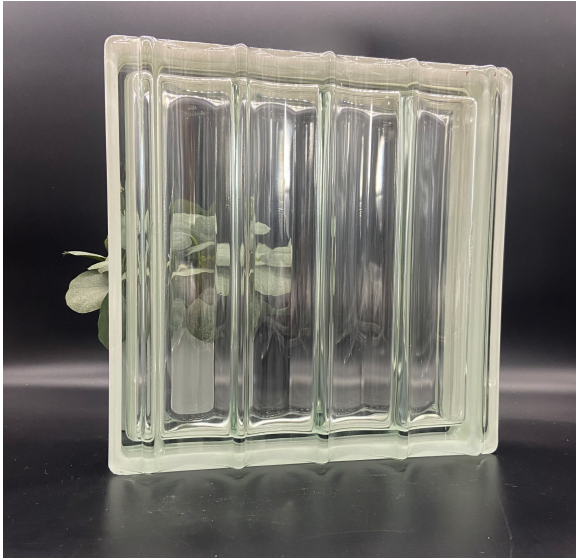
U-Value: 0.53

SHGC: 76

Visible Light Transmission (%): 77

Sound Transmission (S.T.C.): 42

Additional Glass Block Patterns



Doric Q30 - Transparent

Product Line: Design

Pattern: Doric

Dimensions: $11^{-13}/16$ " x $11^{-13}/16$ " x $3^{-1}/8$ "/ $3^{-15}/16$ "

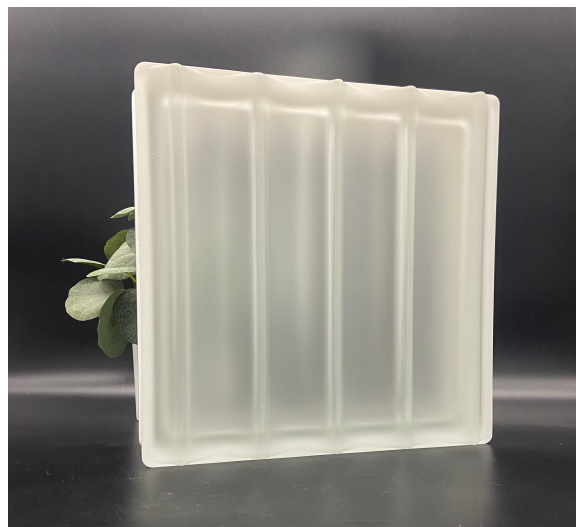
Weight: 16.5 lbs

U-Value: 0.51

SHGC: 79

Visible Light Transmission (%): 80

Sound Transmission (S.T.C.): 40



Doric Q30 2S

Product Line: Design

Pattern: Doric

Dimensions: $11^{-13}/16$ " x $11^{-13}/16$ " x $3^{-1}/8$ "/ $3^{-15}/16$ "

Weight: 16.5 lbs

U-Value: 0.51

Sound Transmission (S.T.C.): 40



Doric Q30 Metalized

Product Line: Design

Pattern: Doric

Dimensions: $11^{-13}/16$ " x $11^{-13}/16$ " x $3^{-1}/8$ "/ $3^{-15}/16$ "

Weight: 16.5 lbs

U-Value: 0.51

SHGC: 75

Visible Light Transmission (%): 79

Sound Transmission (S.T.C.): 40