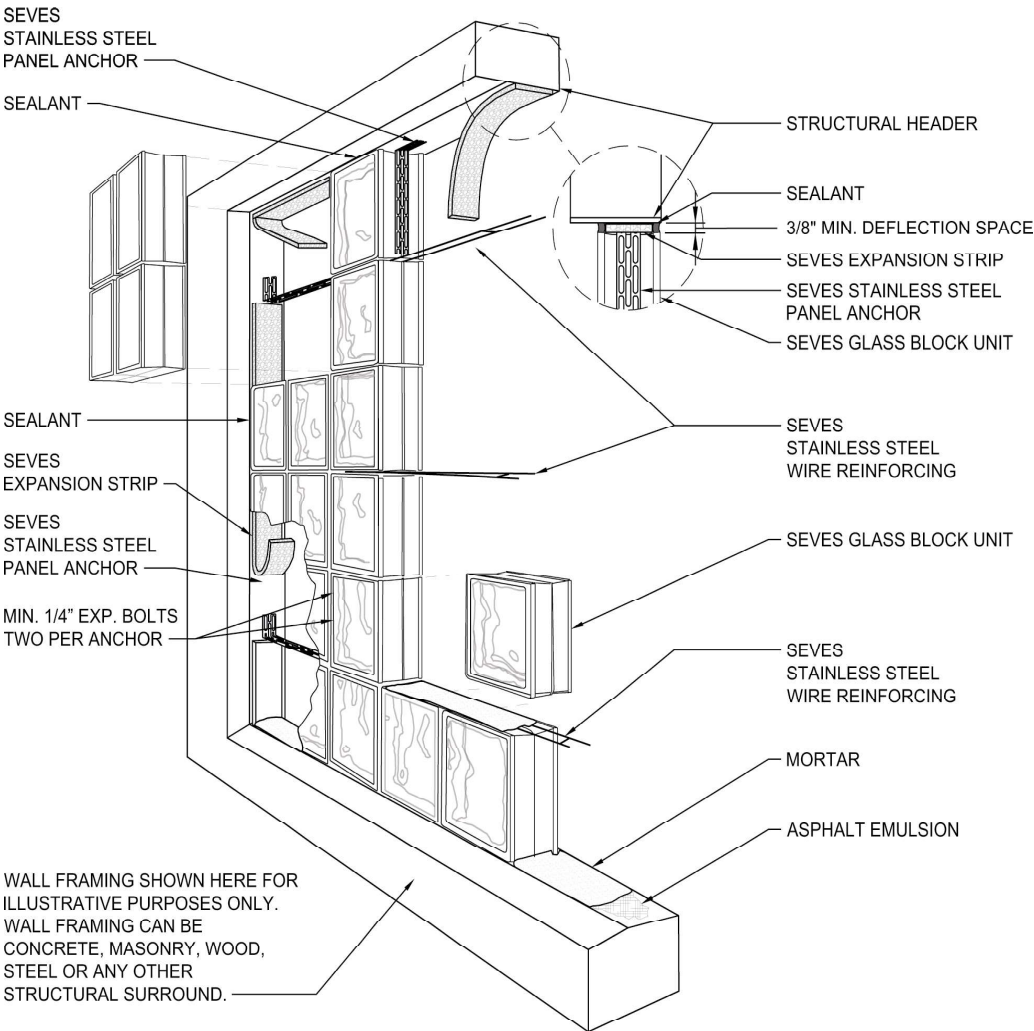


Glass Block Panel Anchor, Wire Reinforcement & Expansion Material

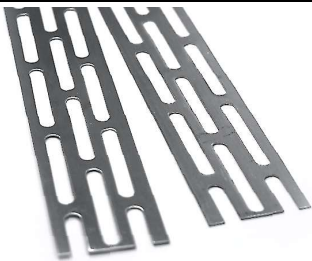
Seves Glass Block S.R.O. | Bilinská 782/42 Duchcov, 419 01, Czech Republic
www.sevesglassblockinc.com



PANEL ANCHOR CONSTRUCTION ASSEMBLY

1 ¾' X 16" X 20GA

Material Conformance
Stainless Steel AISI Type 304
ASTM A666, ASTM A480, ASTM A240/
A240M, ASTM A167



3" X 16" X 3/8"

Polyethylene Foam

Physical Properties	Test Method	Value*
Recovery (%)	ASTM D545 05	97.8%
Extrusion (in)	ASTM D545 05	0.12
Compressive Strength (psi)	ASTM D545 05 @ 50%	14.9
Compression Set (%)	ASTM D3575-00 SUFFIX B	18.3%
Tensile Stress (psi)	ASTM D3575-00 SUFFIX T	103 / 68
Tear Resistance (lb/in) md/cmd	ASTM D3575-00 SUFFIX G	14 / 24
Density (lb/ft ³)	ASTM D3575-00	1.7 (NOMINAL)
Water Absorption (lb/ft ³)	ASTM 545-00	0.001

Meets Application Requirements of:
ASTM D 4819



9GA. SS x 1-5/8' x 3', 4', 7' OR 10' LENGTHS

ASTM A951 / A951M (Std. Specification for Steel Wire for Masonry Joint Reinforcement)
ACI / ASCE 530 (Building Code Requirements for Masonry Structures)
Wire (Stainless Steel): ASTM A580 / ASTM 580M - AISI Type 304

WIRE DIAMETER:

9 gauge (.148" or w1.7)
Side Rods and Cross Rods available in any combination of the above.
Cross welded 12" or 16" O.C.
Panel Reinforcing: two parallel 9 gauge wires either 1-5/8 inch or 2 inch on center with electrically butt-welded cross wires spaced at regular intervals.

